

Orders Gateway[®] Product Line

Release Notes

August 15, 2014

Table of Contents

Overview	1
Features and Functionality	2
New in This Release.....	2
StewartDocs Title Search Export now Supported	3
Defects	4
Additional Information.....	6
Training.....	6
Technical Support.....	6

Overview

This document provides a brief explanation of what has been fixed and an introduction to new features implemented within this release.

Deployment Date: August 15, 2014

Features and Functionality

This section introduces new features and functionality added to Orders Gateway.

New in This Release

Orders Gateway

- The ability to download StewartDocs XML from Orders Gateway has been added. For more information, refer to [StewartDocs Title Search Export now Supported](#).

StewartDocs Title Search Export now Supported

Orders Gateway can now export the data from the Title Search Report into StewartDocs. StewartDocs is program that allows users to create real estate transaction documents and HUDs that can be printed or saved as a PDF. Now StewartDocs XML can be downloaded from Orders Gateway, saved, and then uploaded to StewartDocs.



Note

An update for StewartDocs may be required.

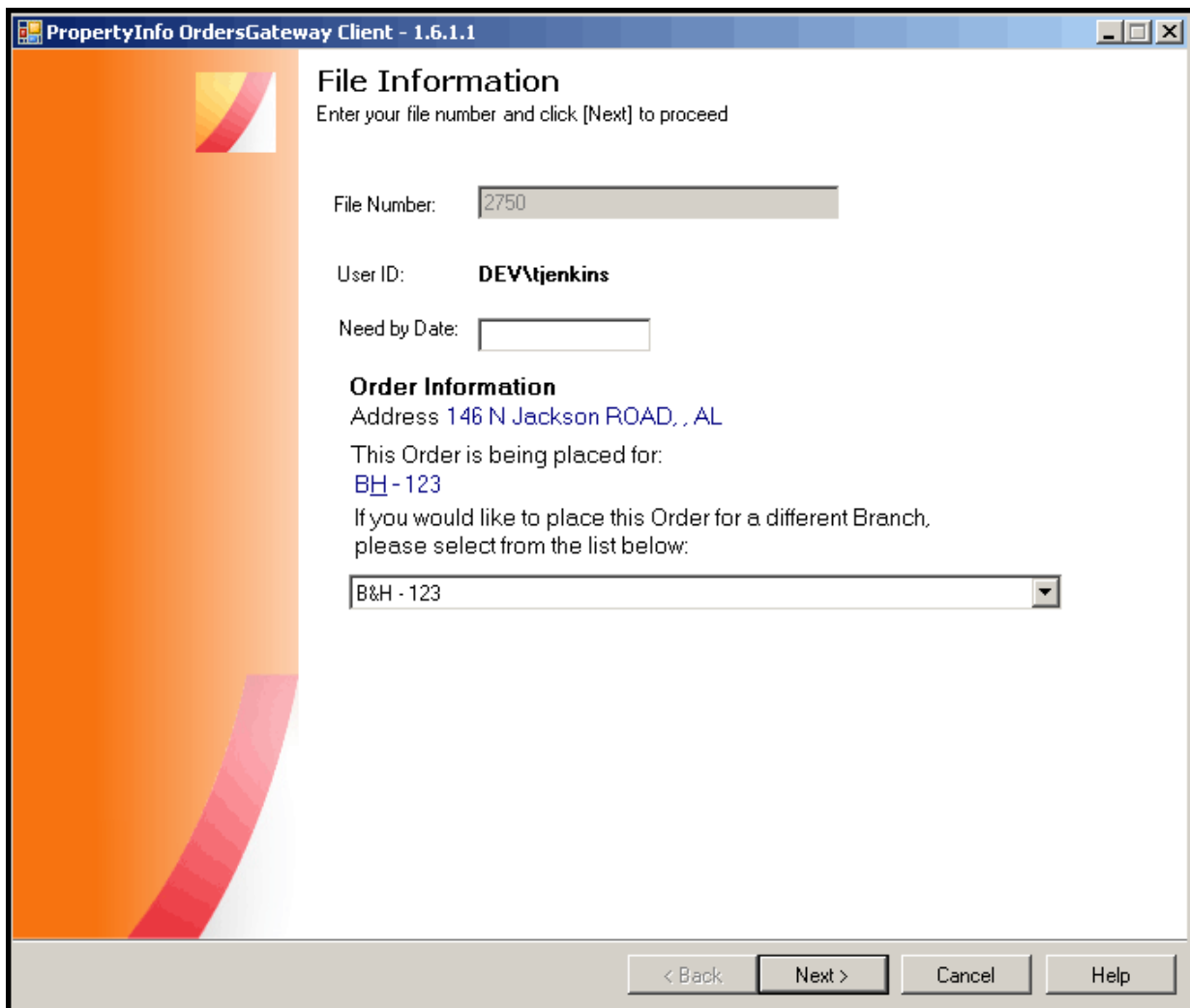
The screenshot displays the 'Orders Gateway' web application interface. At the top, there is a navigation bar with tabs for 'Home', 'Orders', 'Accounting', 'CRM', and 'Tools'. Below this, the 'Orders' section is active, showing 'Order Details'. The main content area is divided into two columns. The left column contains 'Transaction Details' with fields for Transaction Type, File Number, Assoc. File Number, AIM File #, Order Date, Need by Date, Closing Date, Last Modified, Order Status, Sales Price, and Created By. The right column contains a vertical list of actions, with 'StewartDocs' highlighted by a red box. Other actions include Upload Document, Print View, Title Search Report, Load AFW Data, SoftPro/PXT, Order XML, Search Blank, LandTech, AIM+ FileData, Load Customer AIM+ Data, Get Latest Customer AIM+ Data, Title Express, DisplaySoft, Closers Choice (XML), Closers Choice (TXT), TIMS/TDI, DoubleTime, RamQuest, eClosing/PXT, Resware, and Home Warranty. At the bottom, there is a 'Calculate Fees' section and a 'Documents' table.

Add	Documents
	Original.xml
	Original
Edit	AIM+ Starter Document
	Support Documents

Defects

The following defects were fixed.

- Previously, when moving an order to Product Complete, Orders Gateway was treating comas as decimals in the **Additional Search Cost** field so that the **Total Search Fee** field would be incorrect. (For example, enter \$10.00 the **Search Cost** field, then enter \$20,000.00 in the **Additional Search Cost** field. The **Total Search Fee** field would display \$30.00 instead of \$20,010.00.) This issue has been fixed.
- Previously, if the **File Number** in the Orders Gateway Client was changed when orders were sent to Orders Gateway from AIM+, Orders Gateway was unable to return the completed file order to AIM+. This issue has been fixed and the **File Number** can no longer be edited in the Orders Gateway Client. See image below.



Orders Gateway Client with File Number unavailable for editing.

- The ability to save your Orders Gateway password has been disabled. Previously, when opening Orders Gateway, the username and password would autocomplete on the login page so that

anyone that gained access to that computer would have access to Orders Gateway posing a potential security risk. The autocomplete function has been disabled requiring user's to enter their username and password to access Orders Gateway.

- Previously, Orders Gateway was susceptible to Cross Frame Scripting (CFS) so that an Orders Gateway user could be tricked into logging into a malicious website by making it appear as if they were logging into Orders Gateway. This issue has been fixed.
- Previously, multiple error messages were used when logging into Orders Gateway so that the Error message was generated depending on which incorrect login information was entered. This issue has been fixed so that the same generic error message displays anytime incorrect login information is entered when logging into Orders Gateway.
- Previously, clicking **Logout** to disconnect from Orders Gateway redirected your browser to a page outside of the application but did not properly and completely disconnect you from the Orders Gateway server. This issue has been fixed.
- Previously, when uploading files to Orders Gateway there was no restriction as to what type of file could be uploaded. This issue has been fixed and only the following file types can be uploaded: CSV, XLS, XLSX, DOCX, DOC, PDF, TXT, TIF, TIFF, JPG, JPEG, PNG, GIF, EML, MSG, WAV, and ZIP.
- Application pages were being cached locally on each user's computer so that copies of cached pages that may contain sensitive data could be retrieved. This issue has been fixed.

Additional Information

Training

Visit the OG Training Center at: <http://portal.propertyinfo.com/orders-gateway1>. This online library consists of recorded webinars and other useful documentation for you to begin or continue to use Orders Gateway.

Technical Support

For technical support, contact Customer Care at 1.866-464.8179 or OGSupport@PropertyInfo.com.