



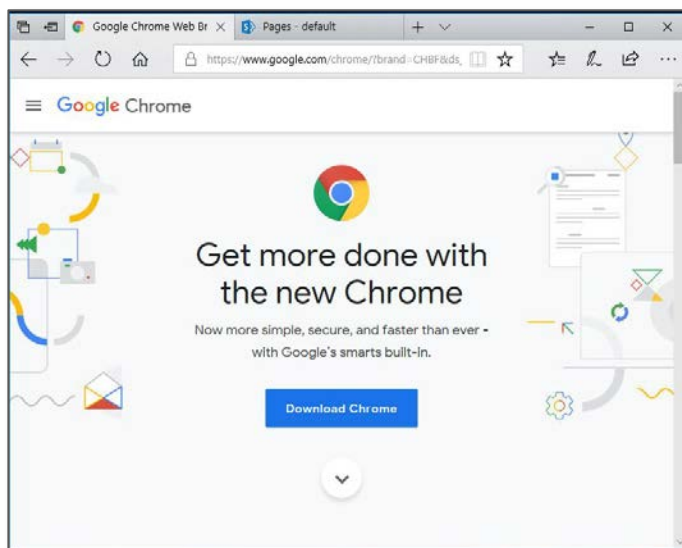
## Installing & Configuring Chrome

## Quick Reference Guide

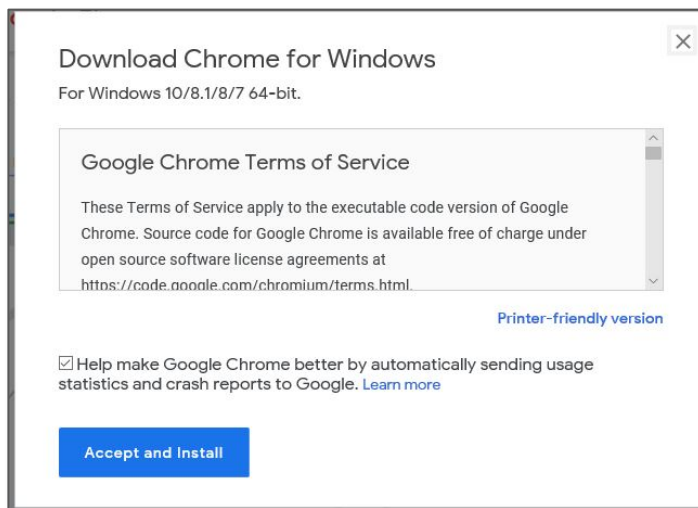
**Please Note:** If Google Chrome is not installed on your system, you may attempt to install and configure it on your own. However, if you do not have admin rights on your computer or are having difficulty installing, please contact [Customer Care](#) and they will assist you with installation.

## Installing Chrome

1. From any installed web browser (e.g., Microsoft Internet Explorer, Edge, Firefox, etc) search for Google Chrome.
2. Click **Download Chrome**.



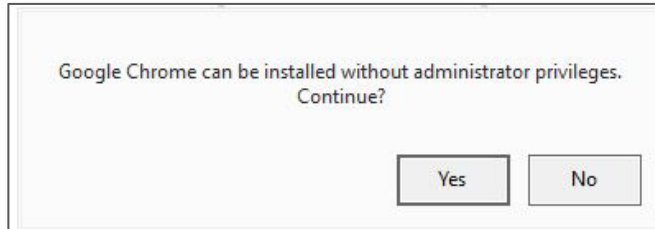
3. Uncheck **Help make Google Chrome better by automatically sending usage statistics and crash reports to Google**. Then click **Accept and Install**.





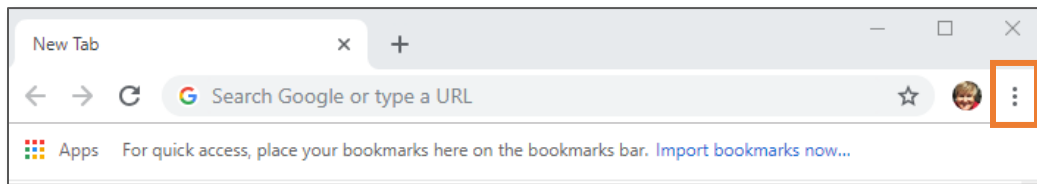
4. Choose **Run**.

- If you receive the following pop-up message, you have **Admin Rights** to continue this installation.
- If you **do not** receive the following pop-up message, you will be unable to complete this installation on your own. Please contact Customer Care at (855) 330-2800 to install Chrome.

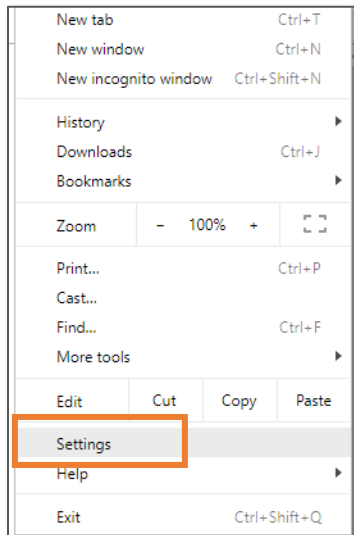


## Configuring Chrome

1. Once installed or if you already have installed Chrome, click the **three dots** in the top right-hand corner of the browser.



2. From the drop-down menu, select **Settings**.

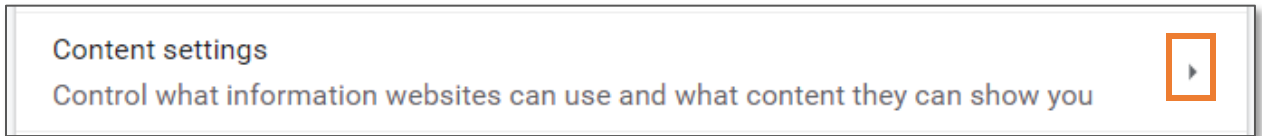


3. Click the **Advanced** option.





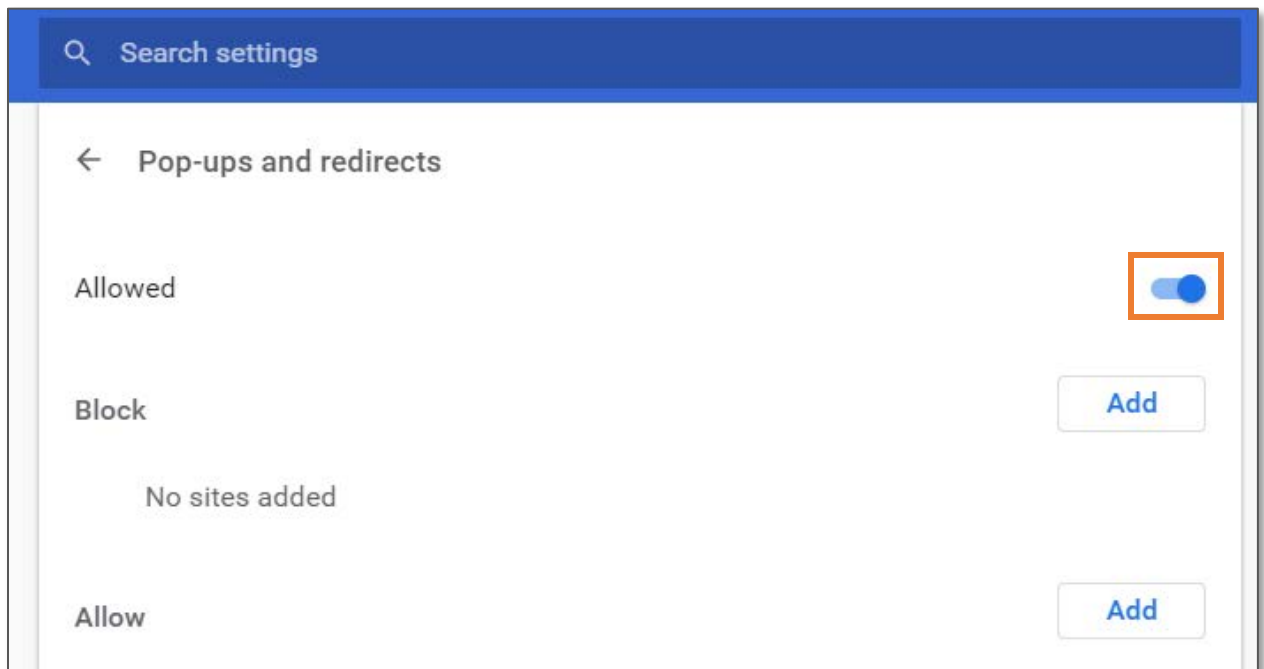
4. Go to **Content Settings** and click the **arrow** to expand.



5. Go to **Pop-ups and redirects** and click the arrow to expand.



6. For the **Allowed** option, slide the selector switch to the right. Your **Pop-ups and redirects** will change from *Blocked* to *Allowed*.



7. Close the **Settings** menu, open a new browser tab and go to **ATS**.

If you are having difficulty configuring **Chrome** or are unable to see or images after logging in to ATS, please contact [Customer Care](#) at (855) 330-2800 for additional support.