

SureClose Print Driver 3.0

Installation Guide

May 2012

Table of Contents

Introduction	1
System Requirements	1
Recommendations.....	1
Installing Java	2
Un-Installing the Previous Version	3
For Users Running Windows XP, Vista or Windows 7	3
Installing the New Version	4
For Users Running Windows XP, Vista or Windows 7	4
For Users Running MAC OS X.....	7
Accessing SureClose Print Driver.....	9
For Users Running Windows XP, Vista or Windows 7	9
For Users Running Mac OS X.....	10
SureClose Print Driver Help.....	11

Introduction

This document provides instructions for installing the SureClose Print Driver 3.0.

System Requirements

This product can be installed on any SureClose compatible server/workstation running one of the following operating systems:

- Windows XP 32 bit
- Windows XP 64 bit

- Windows Vista 32 bit
- Windows Vista 64 bit

- Windows 7 32 bit
- Windows 7 64 bit

- Mac OS X 10.6 – Snow Leopard
- Mac OS X 10.7 - Lion

As a prerequisite, you must install Java prior to installing the SureClose Print Driver. For instructions, refer to the section, *Installing Java*.

Recommendations

Before installing the SureClose Print Driver 3.0, please uninstall any previous versions of SureClose Print Driver you may have on your system.

Installing Java

Before you can install the SureClose Print Driver 3.0 you must install Java. Complete the steps below to download Java.



Note

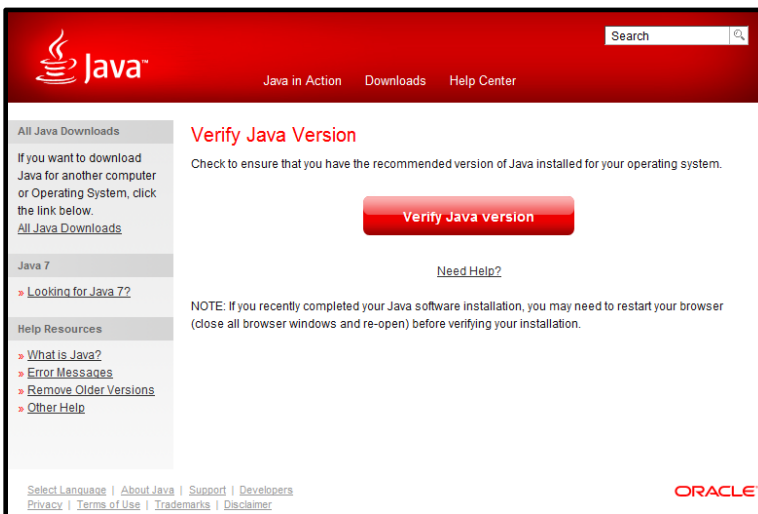
You must have Internet access to download the installation files.

Steps

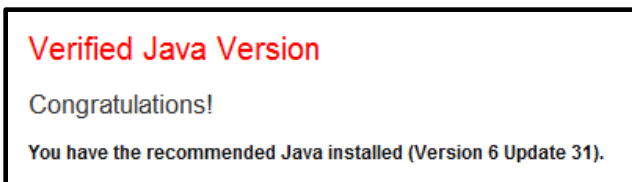
1. Open Internet Explorer, and navigate to: <http://www.java.com/en/>.
2. The Java website displays the link – **Do I have Java?** – click this to verify if you already have Java installed.



3. Click the **Verify Java Version** button.



4. If you already have Java installed, you will see the following message:



5. If you do not see this message, follow the website's instructions to download and install Java.

Un-Installing the Previous Version

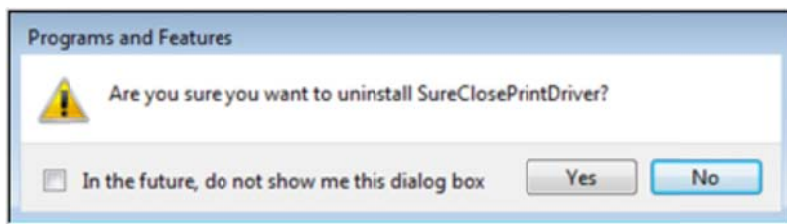
It is strongly recommended that you uninstall any previous version of the SureClose Print Driver prior to installing Version 3.0.

For Users Running Windows XP, Vista or Windows 7

If you are uninstalling a previous version of SureClose Print Driver from a Windows XP, Vista or Windows 7 computer, complete these steps.

Steps

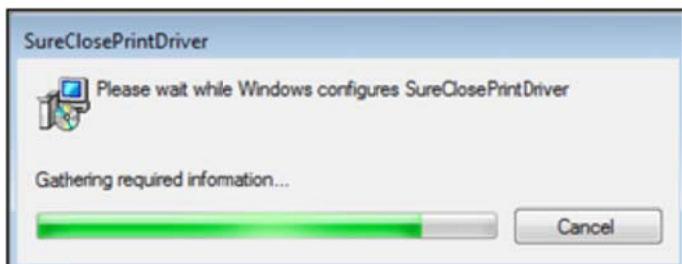
1. On your desktop click **Start**, then click **Control Panel**.
2. From the **Control Panel**, select either **Add or Remove Programs** or **Programs/Program and Features**.
3. Select **SureClose Print Driver**, and then either **Remove** or **Uninstall / Uninstall or Change a Program**.



4. Click **Yes** to uninstall SureClose Print Driver. Windows Installer prepares to remove the program.



5. Click **YES** in the **User Account Control** window to allow the SureClose Print Driver removal to proceed.
6. Wait for Windows to complete the uninstall process. You will know it has completed when this window disappears from screen, and SureClose Print Driver no longer displays in your program list on the Control Panel window.



7. Reboot your system. You may be required to reboot your computer prior to continuing with installation of the SureClose Print Driver 3.0 utility. Refer to [Installing the New Version](#) for more information.

Installing the New Version

Before installing SureClose Print Driver version 3.0, make sure you have uninstalled any previous versions, refer to [Uninstalling the Previous Version](#) for more information.

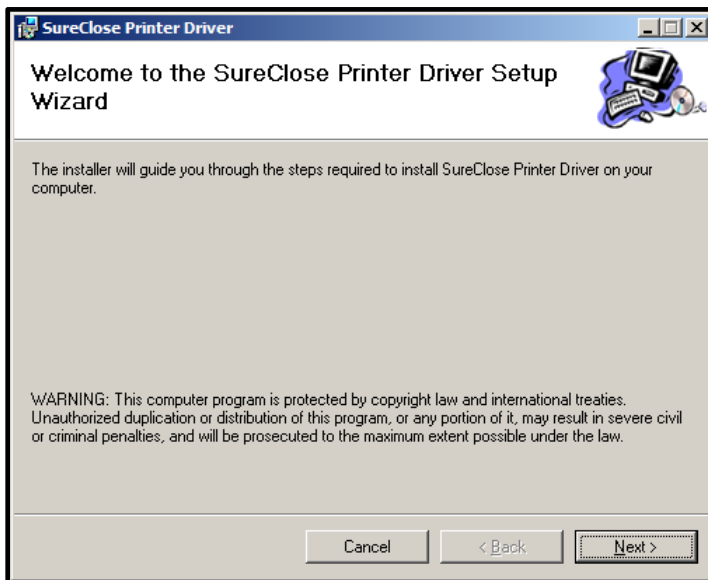
- **If you are installing on Windows XP, Vista or Windows 7**, then refer to the section of this document titled, [For Users Running Windows XP, Vista or Windows 7](#).
- **If you are installing on Mac OS X**, then refer to the section of this document labeled, [For Users Running Mac OS X](#).

For Users Running Windows XP, Vista or Windows 7

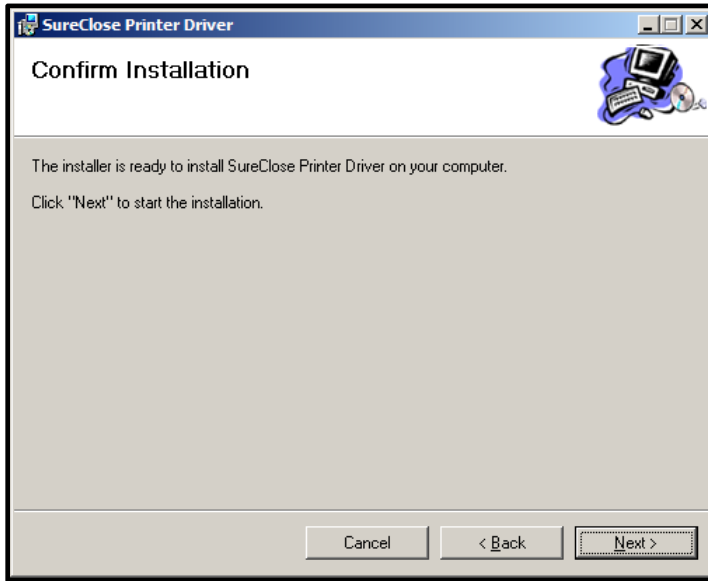
If you are installing Version 3.0 on a Windows XP, Vista or Windows 7 computer, complete these steps.

Steps

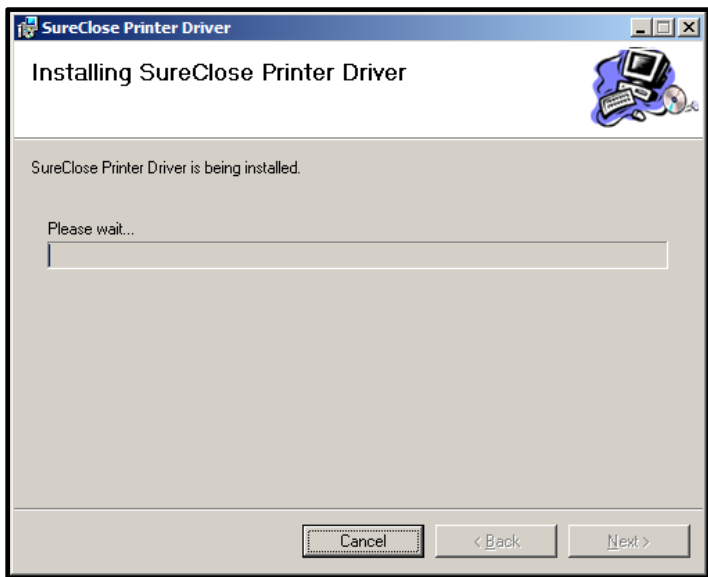
1. Log into SureClose Advantage and click **Home**.
2. Click **Install Print Driver**.
3. Click the link that corresponds to the operating system on your computer and save the file to a convenient location on your computer.
4. Unzip all the files.
5. Double-click to start the installation and follow the screen prompts. The Welcome to the SureClose Printer Driver Setup Wizard screen displays. Click **Next**.



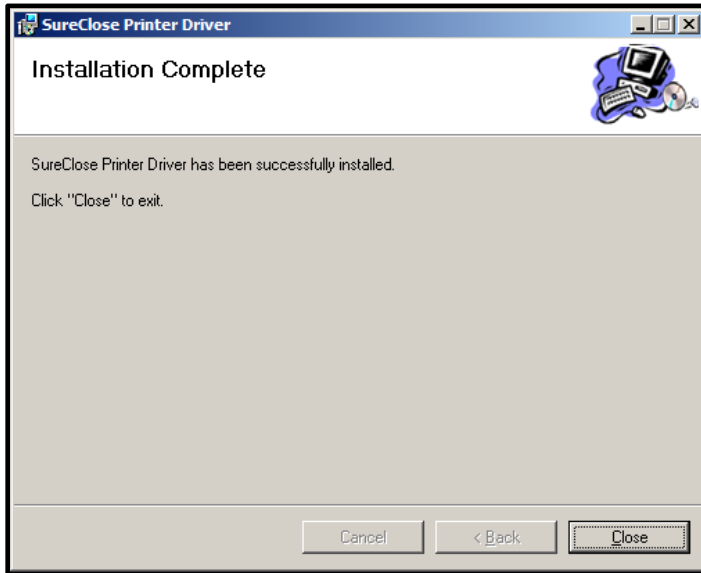
6. The Confirm Installation screen displays, click **Next**.



7. The Installing SureClose Printer Driver screen displays, click **Next**.



8. Installation Complete screen displays, click **Close**.



Note

Click **Yes** in the User Account Control window to allow SureClose Print Driver installation to proceed.

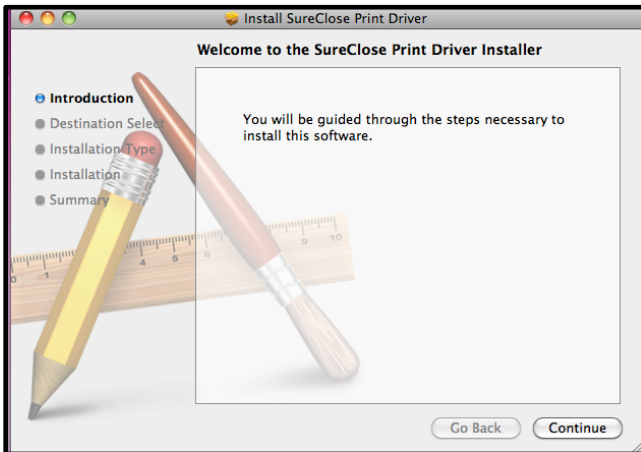
Congratulations! You have successfully installed the SureClose Print Driver utility. Refer to [Accessing SureClose Print Driver](#) for more information.

For Users Running MAC OS X

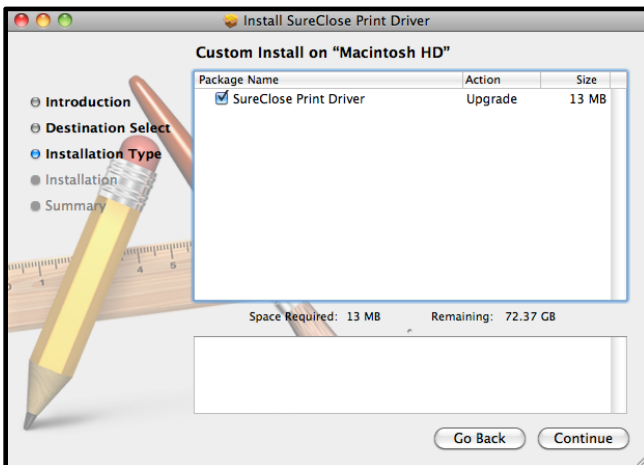
If you are installing version 3.0 on a MAC OS X computer, complete these steps.

Steps

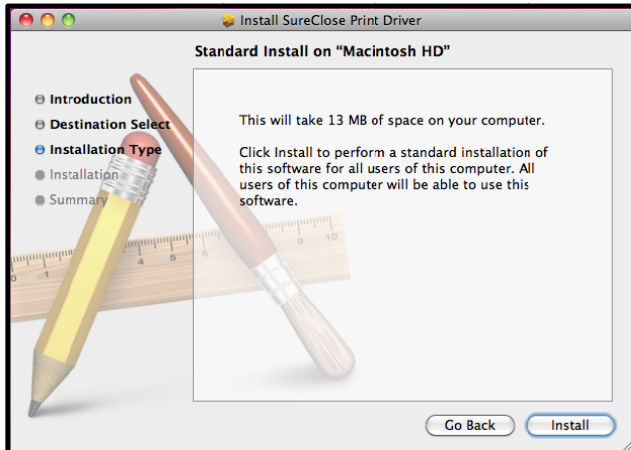
1. Log into SureClose Advantage and click **Home**.
2. Click **Install Print Driver**.
3. Click the link *Mac OS X – Snow Leopard or Lion* and save the file to a convenient location on your computer.
4. Unzip all the files.
5. Double-click to start the installation and follow the screen prompts.
6. From the Welcome to SureClose Print Driver Installer screen, click **Continue**.



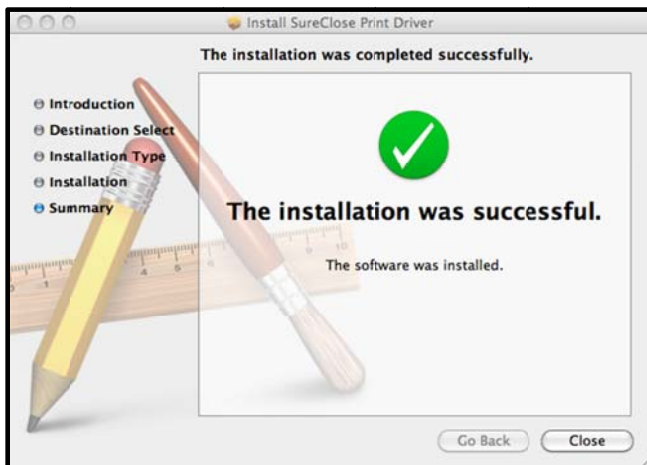
7. From the Custom Install on "Macintosh HD" screen, click **Continue**.



- From the Standard Install on “Macintosh HD” screen, click **Install**.



- From the Installation Successful screen, click **Close**.



Congratulations! You have successfully installed the SureClose Print Driver utility. Refer to [Accessing SureClose Print Driver](#) for more information.

Accessing SureClose Print Driver

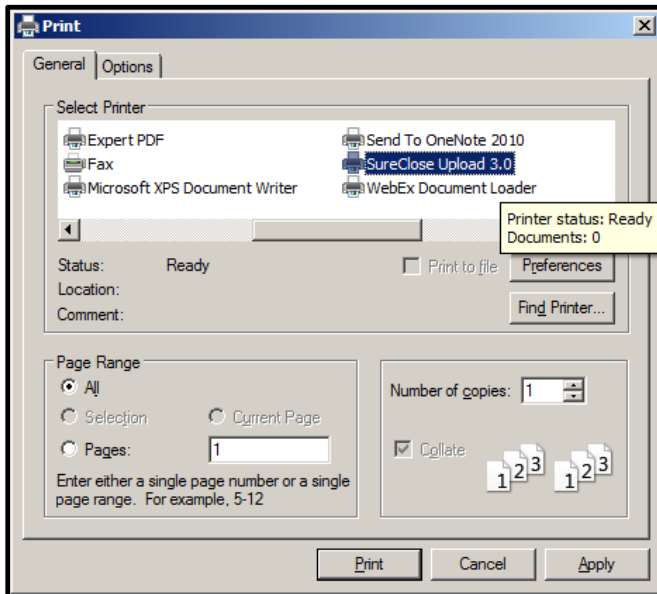
For Users Running Windows XP, Vista or Windows 7

SureClose Supported Document Types

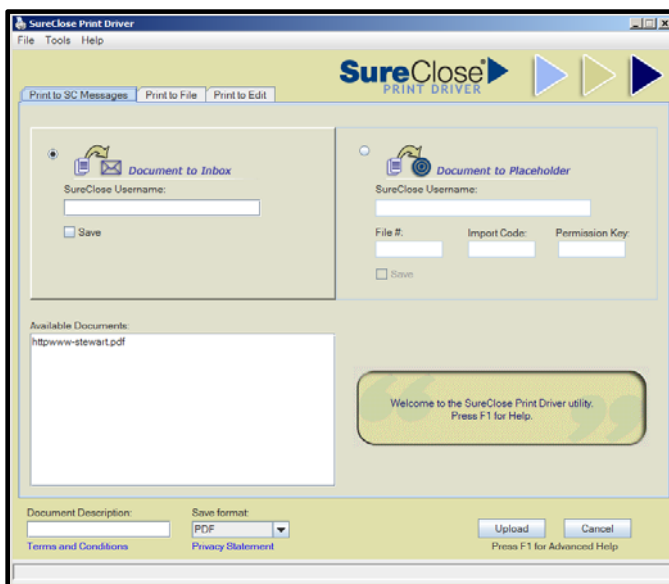
You can upload these types of documents into SureClose using this utility: .gif, .jpg, .doc, .xls, .pdf, and .tiff.

Steps

1. Open any SureClose supported document, and then select **File—Print** from the document menu. The Print dialog box displays.
2. From the **Name** or **Select Printer** list, select **SureClose Upload 3.0**.



3. Click **OK** or **Print**. The SureClose Print Driver window opens.

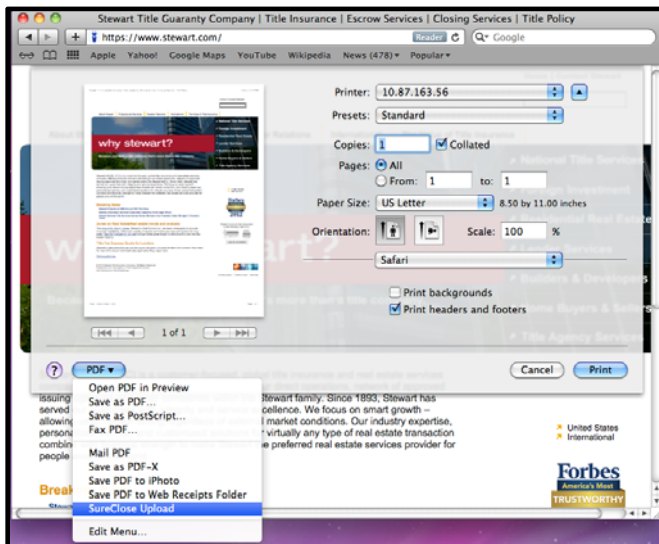


You are ready to begin using SureClose Print Driver to upload documents into SureClose. For assistance, refer to [SureClose Print Driver Help](#) for more information.

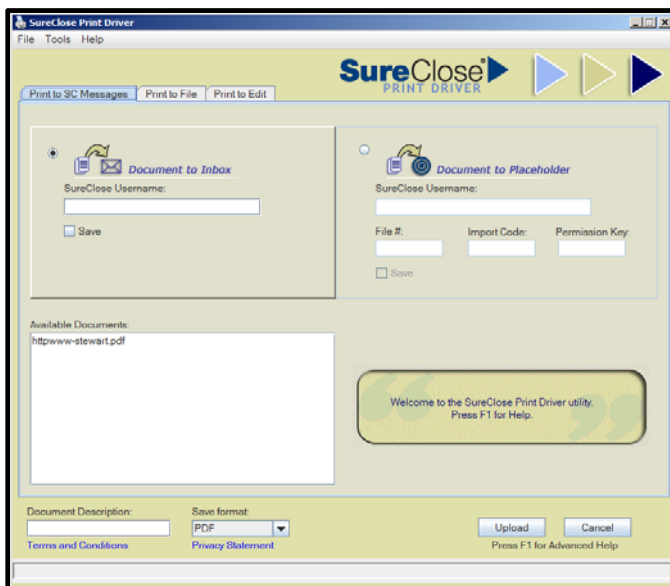
For Users Running Mac OS X

Steps

1. Open any SureClose supported document, and then select **File—Print** from the document menu. The Print dialog box displays.
2. Click the **PDF** button and select **SureClose Upload**.



3. The SureClose Print Driver window opens.



You are ready to begin using SureClose Print Driver to upload documents into SureClose. For assistance, refer to [SureClose Print Driver Help](#) for more information.

SureClose Print Driver Help

1. With the SureClose Print Driver window open, click **Help** then click **Print Driver Help**. Help displays in a separate window.
2. In Help you can get additional information by either clicking on a topic in the **Contents** list or entering a keyword or search term in the **Search** field.

